

## Software Installation

### Mobile Devices (iPhone, iPad, or Android)

Download the latest OneRADON Software from the app store for the mobile device you are using.



*iPhone or iPad*



*Android Device*

#### Notes:

- **Radon Monitor Model 1028™ XP.** The Bluetooth connection is handled from within the OneRADON application and does not require any changes to the phone network settings.
- **Radon Monitor Models 1027, 1028, and 1030.** An iPhone or iPad must be connected to the AirConsole for Wi-Fi connectivity to the radon monitors. Model 1027 is compatible with AirConsole Pro. Models 1028 and 1030 are compatible with AirConsole Standard (Std) and Pro.. Follow the manufacturer's instructions to connect to the AirConsole Wi-Fi signal.

#### Tips:

- *iOS: Keep the AirConsole 5 inches away from the Model 1027.*
- *iOS: To prevent data and/or connection loss, avoid the phone going into sleep mode while connecting or retrieving data. Data retrieval can take up to 90 seconds on occasion as indicated by spinner.*
- *iOS running iOS 11 or higher: Save images in a new HEIF format that cannot be viewed on other operating system platforms. You can configure your iPhone to shoot images in JPG format instead of HEIF format (Settings > Camera > Formats > Most Compatible).*
- *iOS: Configure the OneRADON app to allow access to read photos (Settings > OneRADON > [Allow OneRADON to access] Photos > Read and Write).*
- *Android: When connecting USB cable, a dialog box appears asking permission to access the USB port. Tap OK to continue.*

### Windows PC or Devices Running MacOS

All radon monitor models connect to Windows or Mac via USB port only. Download **OneRADON Software** from the Sun Nuclear Radon Support website at <https://support.sunnuclear.com/radon>.

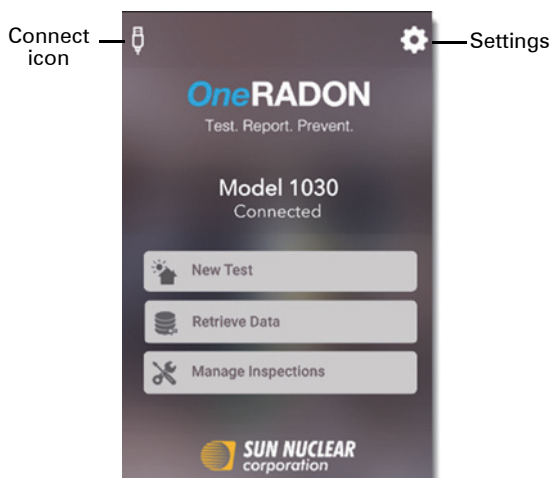
**Note:** If a warning pops up stating that the download cannot be verified, confirm that you want to continue.

- **Windows PC:** Right-click the downloaded file (OneRADONInstaller.exe) and select **Run as Administrator** to install.
- **MacBook:** Downloaded file is a zip file that contains the installation executable. See *MacOS Installation Details* on page 4 for more detailed information.

For Model 1027, ensure the appropriate USB-to-serial adapter drivers are installed for your Windows or MacBook device.

For instructions to use your radon monitor hardware, refer to the *Getting Started Guide* for your Radon monitor.

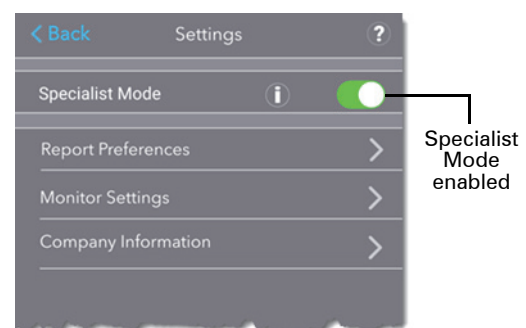
### OneRADON Mobile App, Home Screen



- **Connect icon.** Connect a device.
- **Settings icon.** Set preferences and enter company information.
- **New Test.** Configure test setup options and start a new test.
- **Retrieve Data.** View retrieved data and import into new or existing inspection.
- **Manage Inspections.** View and manage previously generated inspections.

### Settings, Mobile Device

Select the **Settings** button in the top right to access OneRADON settings.



- **Specialist Mode.** Enable (green) or disable. Specialist mode allows full use of software for qualified inspectors; disabled allows technicians to send report data to a Specialist for viewing and approvals. Tap Information icon for details.
- **Report Preferences.** Select options for reporting.
- **Monitor Settings.** Display radon monitor settings, sync date and time, view or change PIN, view or change radon units (pCi/L or Bq/m<sup>3</sup>), and save any changes to Model 1030, Model 1028, and Model 1028-XP.
- **Company Information:** Enter company information and save changes to Model 1030, Model 1028, and Model 1028-XP.

## Using a Mobile Device

Start the OneRADON app on your mobile device and select the Connect icon in the top left. On the top right, select ? to display the adapters needed for Radon Models 1027, 1028, or 1030. An adapter is not needed for Model 1028-XP.

### Model 1027

1. Tap **Connect 1027**, tap **Get Data** and follow the onscreen instructions.
2. When prompted: advance **start date and time** if necessary, enter device **Serial Number** (located on radon monitor label), **Calibration Date** (also located on radon monitor), and **Calibration Factor** (provided with calibration certificate).

**Note:** Start date can be adjusted in one-day intervals; start time can be adjusted in one-hour intervals.

3. Refer to the *Model 1027 Radon Monitor Getting Started Guide* for instructions to set up, start and stop a test.

### Model 1028, 1028-XP, or 1030

1. Tap **Connect**.

**Note:** Radon Models 1028 or 1030 must be in 'ready' mode to receive commands. Model 1028-XP is always in 'ready' mode.

2. On the OneRADON home screen, select **New Test**.
3. If necessary, sync device date and time with radon monitor.
4. Configure test options for **Interval**, **Duration**, and **Delay**.

**Tip:** To select a value in the OneRADON app, tap the option, swipe up or down to select the desired value, and then press **Done** in the upper right corner.

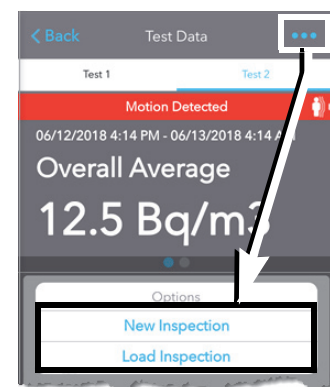
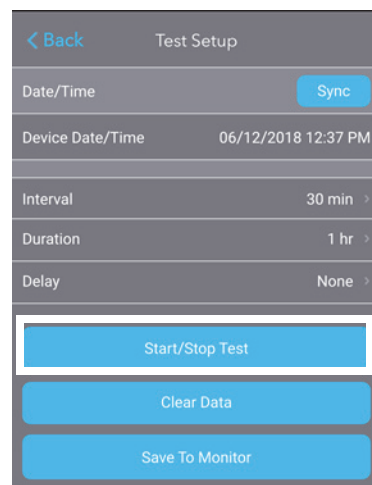
5. Start test:
  - **Model 1028:** Start a test from the device.
  - **Model 1030 and Model 1028-XP:** Start a test from the application or from the device.
6. Stop a test:
  - **Model 1028:** Stop the test from the device.
  - **Model 1030 and Model 1028-XP:** Stop the test from the application or from the device.

### Retrieve Data and Generate Inspections

When the radon monitor is connected to OneRADON, the app automatically retrieves data from the monitor.

1. To view data and start an inspection, tap **Retrieve Data** on the OneRADON home screen. On the 'Test Data' screen, tap the ellipsis (...), then select an option:
  - **New Inspection** to create a report from scratch. Enter the **Name** and **Site Address** and then tap **Save**.
  - **Load Inspection** to import data into a previously created inspection template.
2. After selecting **New Inspection** or **Load Inspection**, swipe left/right to access other screens.
  - **Test Definition:** Enter or view start and stop times, test results, duration and more.
  - **Chart:** View inspection data in a graph.
  - **Pictures:** Add test site photo(s).
  - **Checklist:** Select testing protocols to include in the report.
  - **Radon Information (Specialist mode only):** Select radon risk information or information about understanding radon test results to include in the report.
  - **Report Setup:** Select or enter weather, structure and mitigation information, comments, and inspector identification.  
**Specialist mode only:** enter **Invoice Amount** and **Amount Prepaid**.
3. After reviewing and completing the inspection details, tap the ellipsis (...) to the right of the Report Setup heading:
  - If not running in Specialist mode: Share the inspection with the home office via email.
  - If running in Specialist mode: Select **Generate Invoice**, **Generate Inspection**, or **Generate Both** to generate a PDF that can be sent to the customer.

**Note:** Default report setup information is entered in **Settings > Report Preferences**.



## Using the Desktop App

### Connect Model 1027

Connect the Model 1027 Radon Monitor to the desktop device and power on the radon monitor. In the OneRADON app, select **Devices > Select 1027 Device** and follow the onscreen instructions to establish the connection.

### Connect Model 1028, 1028-XP, or 1030

If using Model 1028, Model 1028-XP, or Model 1030, power up the device prior to connecting to the computer. Click **Devices > Select Device**.

### Settings/Preferences, Desktop Devices

**Monitor Settings.** Select Radon Units (Bq/m3 or pCi/L) and view device serial number. **Model 1030, 1028 and 1028-XP:** Sync date/time to connected device, view/change PIN, and view firmware version.

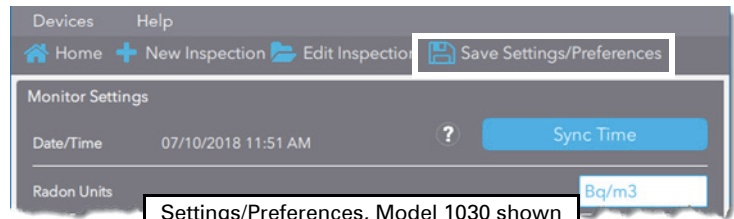
**Report Preferences.** Set Action Level (0 – 800), header image and alignment, signature image, and comment(s).

**Optional Report Items.** Select information to include in all reports: signature image, radon risk and testing protocols information, EPA/Overall averages, inspector license number, test data, and test chart. Selections can be modified for individual reports.

**Include State Notices.** Some states require specific information in reports. Information for these states is provided.

**Display Monitor Values.** Show/change company information, including name, address, phone, and license numbers. **Save to Monitor** saves any changes to a connected Model 1030, Model 1028, or Model -XP Radon Monitor.

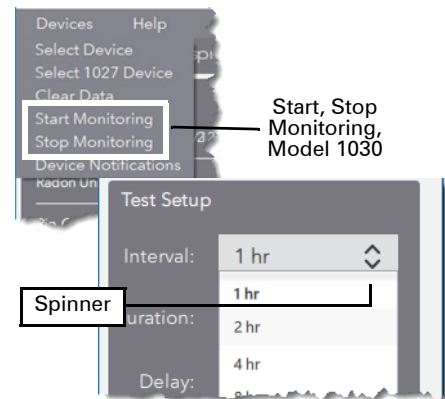
Click **Save Settings/Preferences** to save settings to Preference file.



### Start or Stop a Test

For detailed instructions for starting and stopping a test using the buttons on the radon monitor, refer to the hardware *Getting Started Guide* for your radon monitor model.

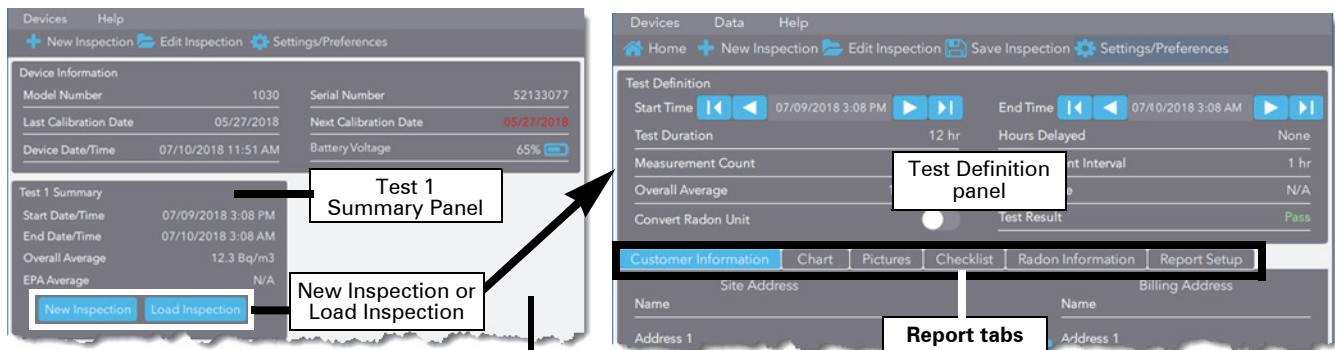
- **Models 1027 and 1028.** Use the buttons on the radon monitor to start and stop a test.
- **Model 1028-XP.** Use the OneRADON app or the touch screen on the radon monitor to start and stop a test.
- **Model 1030.** Use the OneRADON app or the buttons on the radon monitor to start and stop a test.



### Manage Inspections and Reports

Connect the radon monitor to the desktop device. If necessary, in the OneRADON app, select **Devices** and connect.

1. In the **Test Summary** panel:
  - Click **New Inspection** to start an inspection report.
  - Click **Load Inspection** to import data into an existing inspection template.



If connected to the Model 1028-XP, hold the left mouse button down in an empty area of the screen and drag left/right to show up to 10 test summaries

2. Review **Test Definition** panel. View or adjust test start and end times, add or change inspector, and view test result (pass, fail, or not applicable).

## Manage Inspections and Reports, continued

- Below the Test Definition panel, use the tabs to enter or update relevant customer information, view a chart of inspection results, add pictures to include in the report, select testing protocols or radon information to include in the report, and set up the report. See *Tips for working with Inspection Reports* on the next page for more information.
- Report Setup:** Click **Generate PDF Invoice**, **Generate PDF Inspection**, or **Generate Both** to print and save as PDF files.
- In the action bar, click **Save Inspection** to save the entire inspection, including data and all report settings, as a text file.

### Tips for working with Inspection Reports

- Checklist:** Checklist items can be added by clicking the blue **Add Checklist Item** button at the bottom of the screen. Checklist items added in this way can be edited or deleted.
- Pictures:** When adding site pictures, select a picture to include on the report cover page by enabling the check box associated with **Make Cover Picture**. Add other pictures can be added by clicking the blue **Add Photo** button.



*Tip: For pictures taken with mobile phones, use landscape mode.*

*Note: Some photos may be rotated 90° when imported even though the photo orientation is correct when viewed digitally. For example, the photo orientation is landscape, but when imported into OneRADON, it appears in portrait orientation. This could be due to using older digital cameras or phones for capturing the photos or to the operating system on your desktop device. Open the image in your image editing software, rotate the photo, save it, and then import into OneRADON again.*

- Radon Information:** Report items on this tab can be defined for reports in **Settings/Preferences > Optional Report Items**.

## MacOS Installation Details

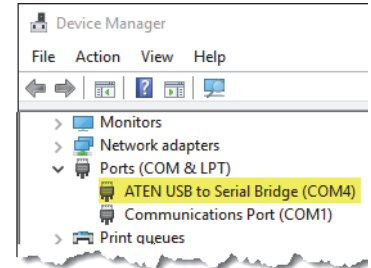
- After downloading the OneRADONInstaller.app, access the Downloads and click **OneRADONInstaller.app**.
- If a warning appears stating that the Security & Privacy settings do not allow installation from the internet or unknown developers, click **OK**. Open **System Preferences** and click **Security & Privacy**.
- "System Software from developer ..." appears in the Security & Privacy dialog box below **Allow apps downloaded from:** and then click **Allow**. Follow the onscreen instructions to complete the installation.

*Note: If installation does not begin automatically, return to the Downloads folder and click **OneRADONInstaller.app** to install.*

## Connection Tips

If the radon monitor is connected to your mobile or desktop device but not recognized by the software:

- Model 1027:** Model 1027 requires the IOGEAR™ GUC232A USB-to-Serial Adapter. Be sure to install the drivers, which can be downloaded from the Sun Nuclear Radon Support website: <https://support.sunnuclear.com/radon/article/10>.  
On your computer, open **Device Manager > Ports** and verify the drivers are installed. **ATEN USB to Serial Bridge** should appear in the **Ports** list.
- Mobile Device:** In the OneRADON app, tap the Connect icon, then **Connect** (Models 1028, 1028-XP and 1030) or **Connect to Model 1027**. See *Using a Mobile Device* on page 2.
- PC/Mac:** In the OneRADON software, select **Devices > Select Device**. In the pop-up dialog box, select the device, and click **OK**.



## Radon Resources

Sun Nuclear Radon Support website	<a href="https://support.sunnuclear.com/radon">https://support.sunnuclear.com/radon</a>
Purchase Sun Nuclear radon monitors, adapters and accessories	<a href="https://radon.sunnuclear.com/products">https://radon.sunnuclear.com/products</a>
Learn more about radon	<a href="https://www.epa.gov/radon">https://www.epa.gov/radon</a>
American Association of Radon Scientists and Technologists, Inc.- National Radon Proficiency Program (AARST-NRPP)	<a href="http://aarst-nrpp.com">http://aarst-nrpp.com</a>
National Radon Safety Board	<a href="http://nrsb.org">http://nrsb.org</a>
View state notices in reports	See <b>Settings/Preferences, Include State Notices</b> in the OneRADON software (desktop app) or <b>Settings, Report Preferences, Include State Notices</b> in the mobile app.